

EXAMPLE OF READING TRAITS



Slight asymmetry in the eyebrows is seen here, the right side has more dramatic flare, and flare or gift for drama, theatre and creative abilities. The left side is more peace and order, but friendly. The bottom of the eyes tell another story as the right eyelid is pulled down going to the side, showing the whites of the eyes under the Iris. The left lid is also lower than normal, indicating extreme stress and emotional turmoil over a period of time. When you see this no matter what they may try to do in expression, make up and smile, the face will never lie, this Guy is under long emotional stress, and needs to sort out his life. He should not be driving as the tendency is to be prone to accident due to lack on concentration. You would not let a any person displaying signs of depression (Melancholy) drive your kids to school, they could finish up in a crash or accident!



A very friendly guy, but of more serious nature, will tend to take things seriously and inclined to be more introverted than extravert. Will tend to display a more quite nature and more laid back. He is analytical and will tend to question why on most things, and has good head for information due the shape of the centre of the forehead. Also has very good concentration and is very patient. The long space from nose to end of chin which is a restlessness and physical motivated, so this is why with the shorter leg and combined with this trait he has good leg dexterity and successful in football, he has natural gift for this. Their might be a possible mood swing in tolerance.



Has 10 out of 10 for eye magnetism, this is where people will come up to you and tell you all their business then walk away and you wonder why they were telling you all this. They are not flirting; they just draw people to themselves due to the dark rich color of the Iris. Very emotional and emotions will play big part in decision making more than logic. Is very sensitive and if upset she will take things personally. Looking at the eyebrow you will notice that her right eyebrow appears to have a very straight line on the underside over top lid. This is desire for complete order and peace; if they do not get this they can become physically ill with stress. The nose is of a good bargain hunter and is very price conscious.



A lustful woman but the eyes are cold, manipulative and controlling. There is a trait of automatic resistance, or stubbornness to authority in the chin area. She will come across as self-willed with high risk to throwing tantrums when she cannot get her own way. She does in fact have good intuition, but like many will ignore the signals and do what ever she feels justifying the path taken. These type of people often reap much regret in later life, due to being proud or hard headed. Relationships will be more inclined to have frequent storms rather than peaceful. Men beware!



Interesting face! Here we see an example of two people, The bottom of the face shows an external very friendly extravert. The eye tells slightly a deferent story. These are what some call tiger eyes. Long and not open, this is sign of secrecy and cunningness hiding behind the mask. When the eyes are almost shut it is as if they are hiding and holding back something they do not want you to know. If she was a second hand car salesman, I would be tempered to take the bus! She comes across as extremely friendly but, there are secrets about this woman she does not want you to know. Watch the press, I bet they will find them and publish it!



Very friendly and emotional. The inner corners of the eyes give away her sensitivity as she is very sensitive possible prone to get tearful easily in emotional situations. The low set eyebrows tell she is happy to talk to most people and very approachable. The roundness of the face indicates she is more compliant in nature, willing to co-operate, in other words not stubborn. The ears in comparison to the line of the nose indicates a person with high standards. It is difficult to see from this photo but if two small lines are under the bottom lid, this will be a trait called Rhetoric, or gift for writing. The width of the eyes show she is just tolerant.



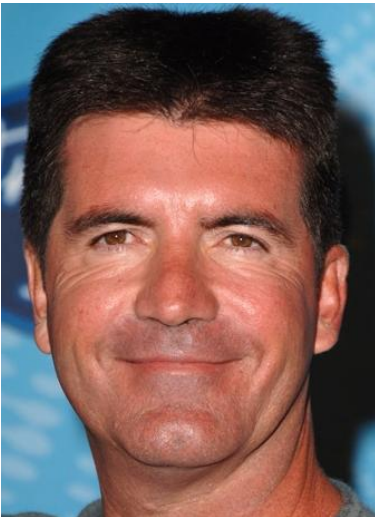
Extremely sensitive, will also take things personally if upset. High emotional and with react emotionally in situation. Just tolerant. Will have excellent taste in shopping for cloths and has good head for deign and fashion due to good imagination trait. Will tend to be picky and fussy and have habit of always checking herself in the mirror due to being very self conscious.



This photo indicates the eyes are forward in the brow and face, This is a sign of good humor. The Philtrim which is the space from the nose to top lip is longer, indicating what we call "dry wit", or quick witty, snappy remarks, sometimes can come across as being sarcastic wit. The eye color is interesting as people with light color eyes are less family orientated and tend to go their own way, whereas people with dark eyes such as Asian Filipino are more inclined to place great importance on family bonding. The light color blue/grey are more inclined to be interested in water and living by water such as the coast and river. Green eyed people tend to like the forest, tress, gardens and inland. Brown eyed can be either but do tend to love the trees and gardens. The tight skin is what we call the clinical look and sign of being picky fussy and everything has got to be just right and in its place!



The flare of the eyebrows raising up and outward is called dramatic, they like the big entrance and flamboyant. But in some cases we can see the trait is going out of control. The hair is a give away sign of what is going on in the mind. When one see someone wanting to present themselves is such a manner, we have to ask why? It is attention seeking. The sign that their is something seriously going on here is the right lower eyelid dropping and displaying the white of the eye under the Iris. As seen in quite a few celebrities this trait is becoming more common, showing although they may present themselves as great fun loving people, they are in fact very unhappy and their life is overwhelmed with stress and anxiety. As stated before the face never lies!



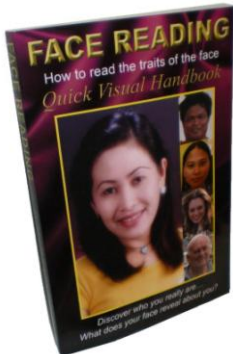
Thick hair is a sign someone not outwardly sensitive. The eyes can be clearly seen as sloping downward and outward. This trait is called critical perception, in other words when he looks at something the first thing he sees, are all the faults. This is the number one trait for marriage breakups as it is very difficult to please such fault finders, if the eyes are close this will amplify the trait. The good trait shown here is the fact that the head is square looking showing vertical sides not inward. The head shape show good concentration and patience, but the sides of the forehead is what we call smooth with no dents in the side of the brows, when we see this it is a sign of being very direct. In some case it can come across and rather insensitive, or rude, a trait found in many Chinese people. They just have habit of saying exactly what they think even if it hurts, when in fact they are simply being honest. Eyebrows indicate good organization and creative ability often seen in good project managers.



Exposed top eyelids, that is, they can be clearly seen, are an indicator that this person is what is termed a bottom line person. They want to know what is it, how much and where can I get it? They do not require more information. The eyebrow shape trait here is called "mechanical appreciation" It is the gift to see how things are made and put together. This trait is seen in draftsmen and architects for example. The head shape shows good imagination. Again in this face we see the underside of the eyebrow looking as if it is a straight line. This indicates a very warm friendly person who will talk to anyone. If peace is removed or disturbed it is common to see these types of people go completely out of control and then return as if nothing has happened. It is like a sailing yacht caught by a gust of wind, they are as Popeye used to say "I can stand so much, but I can't stand no more" they just snap, but are the friendliest of people.



The opposite to the above is the covered eye lid which is the trait of being analytical. These types of people like to question everything and ask why? The fullness of the Iris is a sign of emotional warmth, even though the Iris is light in color the magnetism is still strong. The forward appearance of the eyes is good humor, the facial shape being rounder shows also a more compliant and cooperative nature. A person easy to get along with. The half moon eyebrows are called "Design appreciation" these people love to see a job or project from start to finish, they make very good project managers as they have the gift of putting things together.



For more information and how to read people see the book

Face Reading –How to read the traits of the face

Available from website
www.facereading.tv